

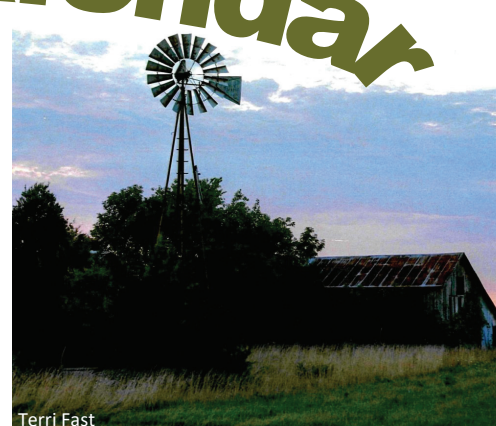
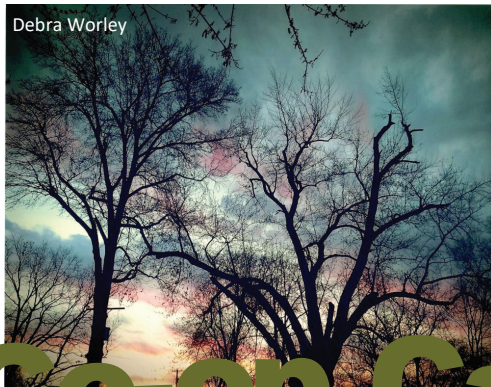
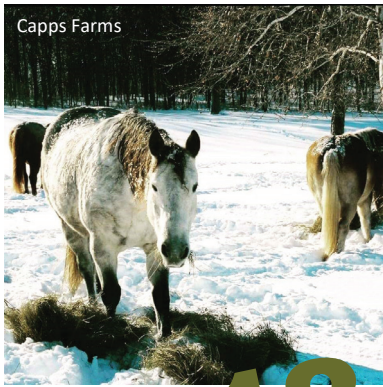


Sac Osage Electric Cooperative

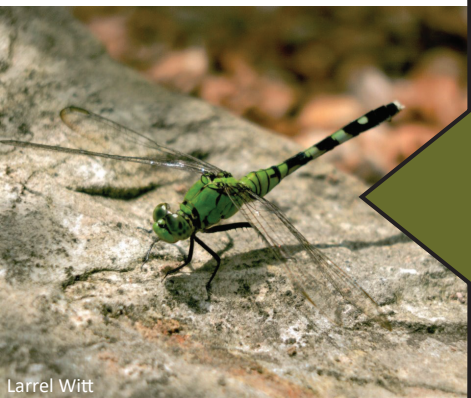
News

P.O. Box 111, 4815 E HWY 54
El Dorado Springs, MO 64744
Telephone: 800-876-2701
Visit us on the Web - www.sacosage.com

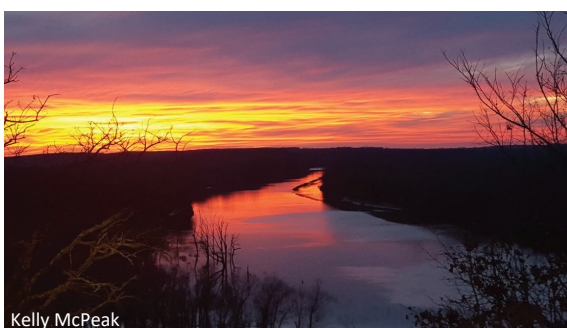
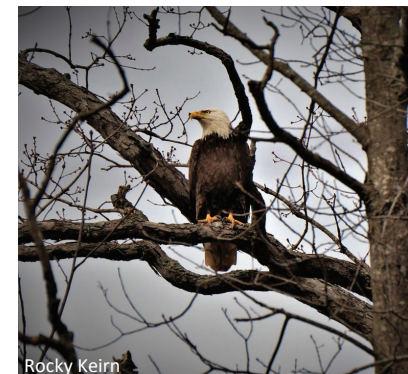
A Touchstone Energy® Cooperative 



2018 Co-op Calendar



Sac Osage is pleased to announce the photo contest winners for the 2018 Calendar. Congratulations to the winners and thank you to all who entered. Calendars can now be picked up at Sac Osage Headquarters .





What Does 2018 Hold In Store?

This time of year a lot of people are thinking about Christmas and the New Year and what the future holds. Here at Sac Osage Electric Cooperative, we are investing a lot of our time thinking about expense budgets, new rate designs and how we are going to meet our financial obligations.

It takes a great deal of effort and money to ensure that the components of our electrical system are reliable, to keep trees from growing into our power lines, and to responsibly employ new technology when needed. Never in recent history have we had so many new challenges facing us all at once.

In 2018, the power supplier for Sac Osage Electric Cooperative announced an increase in rates that, along with other factors, would result in an overall increase in our power costs of 6.8% over what was budgeted for last year. In dollars, the same 150,000,000 kWh's in 2017 would cost us \$625,699 more in 2018. Although other costs are going up as well, power costs now represent about 53% of our total cost of electric service.

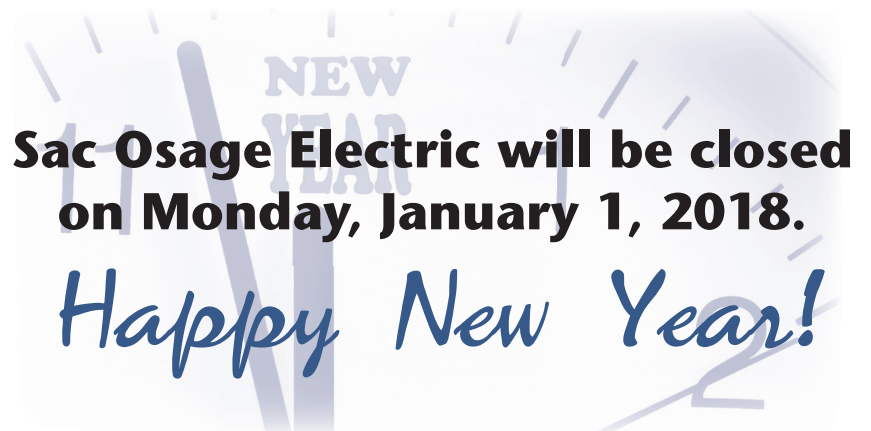
We strive to keep our energy affordable. Sac Osage Electric last raised its rates on April 1, 2015. While every effort is being made to cut costs while not jeopardizing reliability, some expenditures cannot be avoided and certain financial benchmarks must be achieved. We are now determining what adjustment must be made to our rates in order to meet our financial obligations.

Meanwhile, we are also continuing to design a cost-based rate structure which will more fairly charge each individual customer based on the peak demand (kW) that they impose on the electrical system. Such a rate design would most likely reward a customer with a steady, consistent usage pattern throughout the day while minimizing electric energy usage during the peak kW usage hours of 6-9 AM and 4-8 PM.

Our goal is "To provide safe, quality electric service... at the lowest price consistent with sound management principals". We strive to do our best as a member-owned Cooperative to fully achieve this goal.

Sac Osage Electric Recognizes Years of Service

Experience is a valuable commodity in any workplace, especially in a cooperative where we serve member owners every day. Sac Osage Electric Cooperative is extremely proud to have these three dedicated employees who have given many years of quality service to the Cooperative. At the annual Christmas Dinner in December, the employees shown below were honored for their years of service at Sac Osage Electric Cooperative and were presented with a cooperative service pin. Those employees recognized for their years of service were, from left to right: Troy Lasley, Journeyman Lineman, 25 years; Kristi Toliver, Work Order Clerk, 25 Years, and; Ralph Bland, Financial & Administrative Manager, 10 Years.



SAFETY FIRST!



Do you know what to do if your car comes into contact with a downed power line? Stay in the car if at all possible. Call 911 and wait for help to arrive. If you must exit, do it by jumping as far away from the vehicle as possible, then move farther away by shuffling. You can find more at www.safeelectricity.org.



Energy Efficiency

Tip of the Month

Despite some claims, space heaters will not lower your electric bill. In fact, they could actually increase energy costs. There are better ways to save on heating. The most effective way is to lower your thermostat to 68 degrees and block any drafts that might let cold air into your home. Contact the energy advisors at your electric co-op for more energy-saving tips.