



# Sac Osage Electric Cooperative

## News

P.O. Box 111, 4815 E HWY 54  
El Dorado Springs, MO 64744  
Telephone: 800-876-2701  
Visit us on the Web - [www.sacosage.com](http://www.sacosage.com)

A Touchstone Energy® Cooperative 



May 2022

## Take Control and Save Now Allows Forms To Be Submitted Online

Take Control and Save is Associated Electric Cooperative's long time energy program in which Sac Osage Electric Cooperative participates. The program offers rebates to members for certain products that will reduce electricity consumption and demand. Launched in 2008, Take Control & Save builds on distribution cooperatives' longtime energy efficiency efforts. Staff from Associated and member cooperatives continually review research and analyze the most cost-effective and workable energy efficiency measures for the three-tiered system. Take Control & Save continues to evolve as it responds to member recommendations and further technical analysis.

Sac Osage Electric Cooperative in partnership with Associated Electric Cooperative has offered the Take Control and Save Rebate program to members since its launch. The program has a proven history of saving energy and saving members money. Over the years the program has been modified and expanded with the bottom line being kilowatt hours saved and more money in members' pockets.

The number one category of energy used across the cooperative is heating and cooling. The Take Control and Save program has concentrated efforts to address this largest area of electricity usage.

### HEAT PUMPS

New ground source heat pump installations may qualify for a rebate of \$750 per ton. Qualifying replacement equipment may be eligible for a \$300 per ton rebate. Air to air heat pumps



Residential	Promotion Dates
Energy Efficient Electric Water Heaters	10/01/2020 - 12/31/205
ENERGY STAR® Heat Pump Water Heaters	10/01/2020 - 12/31/205
ENERGY STAR® Advanced Thermostats	10/01/2020 - 12/31/205
ENERGY STAR® Window Air Conditioners	10/01/2020 - 12/31/205
Central Air Source & Mini-Split Heat Pumps	10/01/2020 - 12/31/205
Ground Source Heat Pumps	10/01/2020 - 12/31/205

can qualify for a \$300 per ton rebate. All heat pumps must meet minimum energy efficiency and installation requirements insuring real long term value to members. Mini-split heat pump systems are a more recent edition to the air to air rebate and are an excellent solution for some members.

### ROOM AIR CONDITIONERS

For those members who do not have a whole-house cooling solution, the Take Control and Save program offers a rebate on room air conditioners. Energy Star rated room air conditioners can qualify for a rebate of \$50.

### THERMOSTATS

New smart thermostats can help members "beat the peak" and save in overall energy consumption. The Take Control and Save program offers a \$50 rebate on Energy Star rated advanced thermostats.

Outside of heating and cooling there are places members can save money. The Take Control and Save Program also offers rebates on other electric energy users.

### WATER HEATERS

Electric water heaters are eligible for a rebate up to \$50. An energy efficient water heater can replace a current electric water heater with an efficiency less than 0.9, or a gas water heater. Heat pump water heaters are also eligible for a rebate.

### ELECTRIC VEHICLE CHARGERS

The EV charger rebate is for a new Level 2 charging station for an electric vehicle. The charging station must be Energy Star rated and purchased within 90 days of submitting the rebate application. Charging stations allow electric vehicle owners to charge at home. Sac Osage members can charge off-peak and take advantage of the low 6.2 cent per kilowatt hour energy rate.

Take Control and Save rebates are now easier than ever to access. The forms can now be accessed and filled out on-line. Supporting documents such as receipts and manual-J calculations can be uploaded with the rebate forms. This new ability will streamline the process and let members access these funds more quickly. Members can find the online forms at [www.sacosage.com](http://www.sacosage.com).



## Sac Osage Electric Cooperative Offices will be closed, Monday, May 30 In Observance of Memorial Day

WE WILL NEVER FORGET.

*We salute you.  
We thank you.*

Let us remember those who  
courageously gave their lives.

### Selecting a tree?

If you are considering planting a tree, carefully select its location before you begin digging. Also, call 8-1-1 before you break ground to get underground utilities marked. If trees are planted in the wrong location, they can be expensive to maintain and even dangerous. Safe Electricity offers tips on how to pick an optimal location.

A mature height of fewer than 15 feet is recommended if planting near lines. Some trees that are generally not tall enough to interfere with lines include crabapple, honeysuckle, juniper, flowering dogwood and hawthorn.

Trees should never be planted directly under power lines, near poles or too close to electrical equipment.

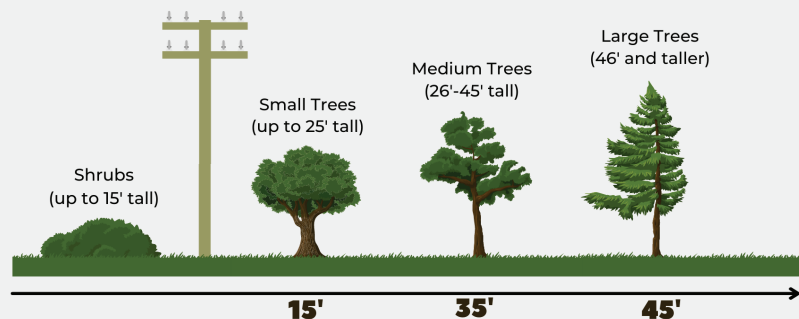
Once you have a tree selected, call 8-1-1 before putting a shovel to the ground. The "Call Before You Dig" number is a free service that locates and marks public underground utilities in your yard or on your land. Call several business days before you plan to dig. Locators will mark public underground utilities such as electric, gas, water, cable and fiber. The service does not mark privately owned lines or pipes.

Article provided by SafeElectricity.org

## May is Catch-Up Month for Budget Billing

### Plant the RIGHT TREE in the RIGHT PLACE

The larger the tree, the farther it should be from a power line. Avoid planting beneath power lines, near poles or close to electrical equipment.



# Can You **Gig** It?

2 Gig fiber internet from Connect, powered by Sac Osage Electric Cooperative, will be a game changer for our community.

**2 Gig\***  
**\$99.95**

**1 Gig**  
**\$79.95**

**100 Mbps**  
**\$49.95**

\*\*Connect Premier offers download speeds of up to 2 gigabits per second; upload speeds are typically between 1 and 2 gigabits per second. 2 gigabit speeds can be obtained by directly connecting via ethernet cable to the ONT. The device conducting the speed test must be capable of sending and receiving data at a minimum of 2 gigabits of throughput.

Check availability and learn more at:  
**ConexonConnect.com**





# Call the Cooperative if Considering Solar

Distributed generation is when a member is producing power through a renewable energy source such as wind or solar and transmits excess energy into the grid. An inter-connected system allows the member to use energy from the grid when their system is not providing enough to supply their needs.

On January 1, 2008, the State of Missouri's Net Metering Law took effect, requiring all electric utilities to offer a net metering program to customers generating up to 100 kilowatts of electricity. These systems can generate electricity using wind energy, solar-thermal energy, hydroelectric energy, photovoltaics, fuel cells using hydrogen produced by one of the aforementioned resources and other sources of energy certified as renewable by the Missouri Department of Natural Resources.

Systems must be intended primarily to offset part or all of the member's electricity requirements and must be located on property owned, operated, leased or otherwise controlled by that member. The Net Metering Law states that any power that is not used by the member generating the power (commercial or residential) will be credited



to their utility bill at the utility's avoided-cost rate each month. Credits from net metering must be used within twelve months of generation or they expire.

Credits will not be applied to the service availability charge or demand charges. As Sac Osage has a four part rate, a member will see the credits applied to the "ENERGY CHARGES" portion of their bill. If the member is connected they will still have a service availability charge each month. If they are using power when their system is not supplying enough to meet their demand, they will have the demand charges as well. A residential member

who produces enough energy from a distributed system to have net energy usage of zero but an on-peak demand of 5kW and an off-peak demand of 5kW, would have a bill for that month of \$69.30.

Members who want to save on their electricity bills, should carefully examine all financial aspects first. Consider reducing their energy use by making their home more energy efficient. Many efficiency measures have a faster return on investment, and the initial investment is often less. Sac Osage has rebates on efficiency measures and home energy audits that can provide real savings.

Date Meter Read	Present Reading	Previous Reading	KWH Used	Mult	Meter #
07/01/2021	25297	25313	0	1.0000	
Activity Since Last Bill		\$ Amount	Current Bill Information		\$ Amount
Previous Balance		69.31	SERVICE AVAILABILITY		30.00
Payment		-69.31	PEAK DEMAND 5.376 KW @ 6.36 /KW		34.19
Other Adjustments		0.00	OFF-PEAK DEMAND 4.096 KW @ 1.50 /KW		6.14
Balance Prior to this Billing		0.00	TAXES		0.17
Bill is due upon receipt.  To avoid a penalty, PAYMENT MUST BE IN THE OFFICE ON OR BEFORE THE 25TH DAY OF EACH MONTH. If you are mailing your payment, please allow sufficient mail delivery time.  If payment is not received by the 5th of the following month, your account will be subject for disconnection. YOU WILL RECEIVE NO FURTHER NOTICE.  Please see the back of this bill for further information about our delinquent account disconnect policy.			PRIOR ACCUMULATED KWH ENERGY CR		7.35
			PEAK HOURS ARE 6-9 AM AND 4-7 PM. ALL OTHER TIMES ARE OFF PEAK HOURS.		CREDIT CARD CHARGE ON 07/20/2021. DO NOT PAY.
Charged On		07/20/2021	Total Due		70.50
Please add 10% to current month's charges if paying after the 25th.					

Above is an example of a net metered account that did not have energy charges for the month, but still had demand.